

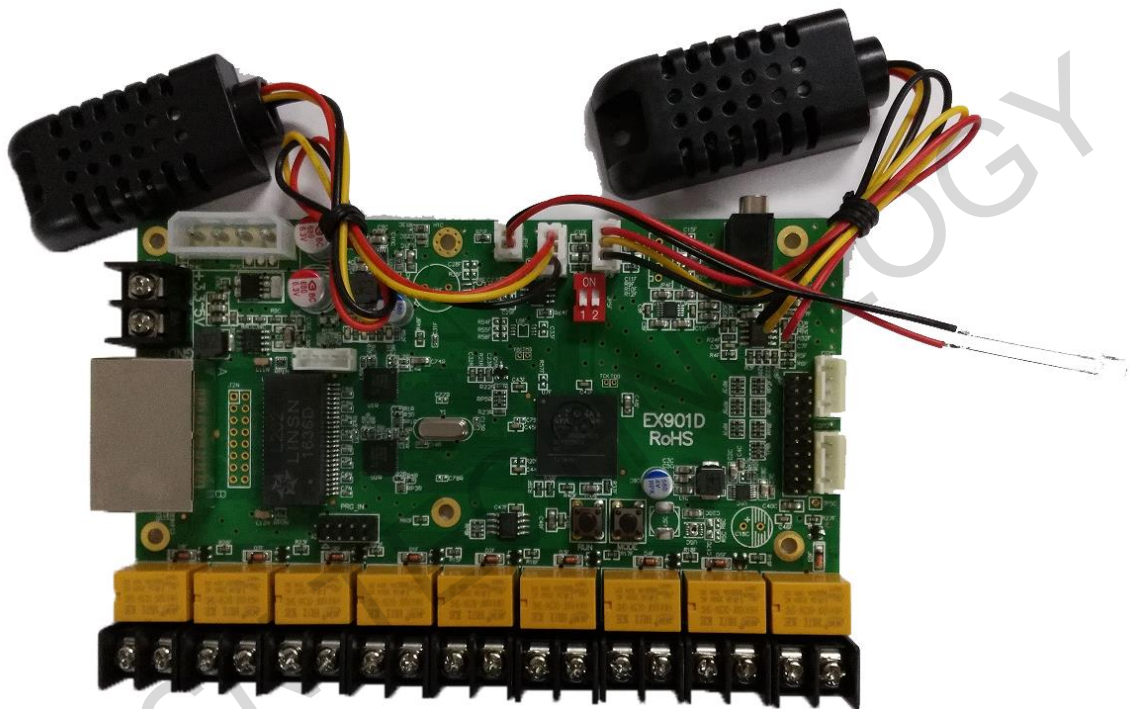
## Multifunction Board

### EX902D

V1.2

Jan 2018

#### 1. Features



- 1) One audio output;
- 2) Two temperature/humidity detection modules to detect the temperature/humidity inside and outside the cabinets separately;
- 3) One light sensor for auto-adjusting brightness;
- 4) Three relays for powering on/off, three relays for

Official website: [www.linsn.com](http://www.linsn.com)

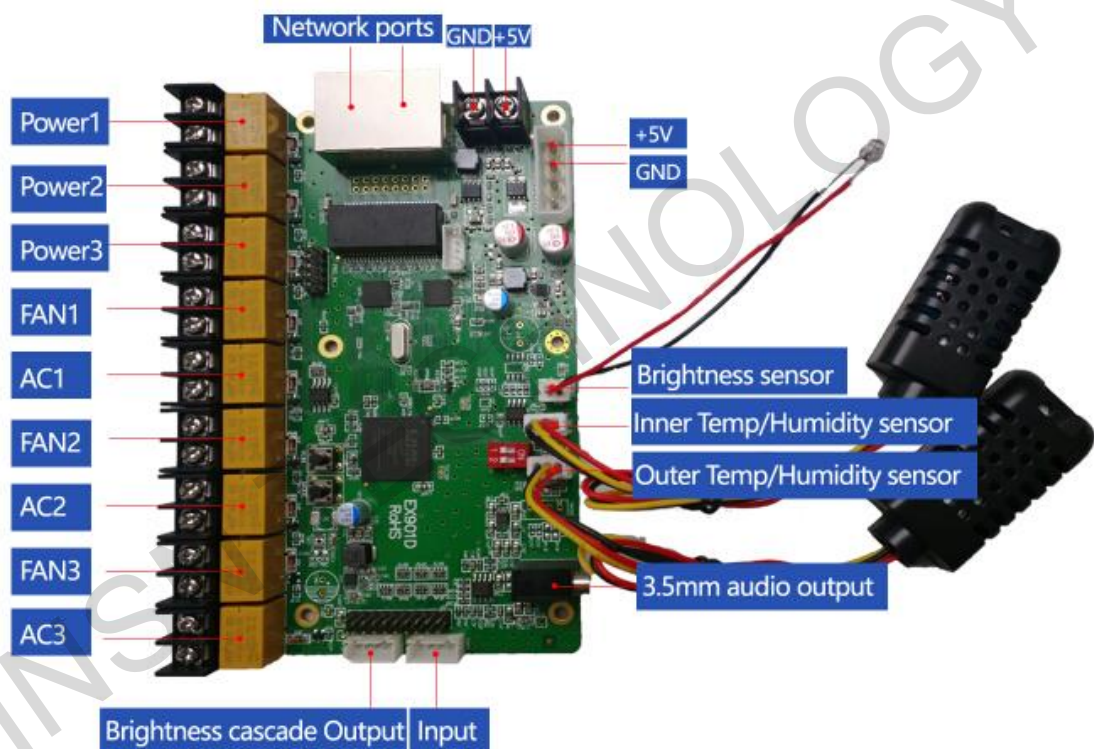
Add: Floor 15&16, Jiajiahao Business Building, No. 10168, Shennan Blvd,  
Nanshan District, Shenzhen

Tel: +86-0755-86183590/ 4008836968

opening/closing fans, and three relays for opening/closing ACs;

- 5) Timing function, can be used as a timer or delayer;
- 6) Supports cascade function.

## 2.Interface instruction



**Note:** There are two power supply ports, and please just use one of those.

## 3.Usage

### 1) Connection

Official website: [www.linsn.com](http://www.linsn.com)

Add: Floor 15&16, Jiajiahao Business Building, No. 10168, Shennan Blvd,  
Nanshan District, Shenzhen

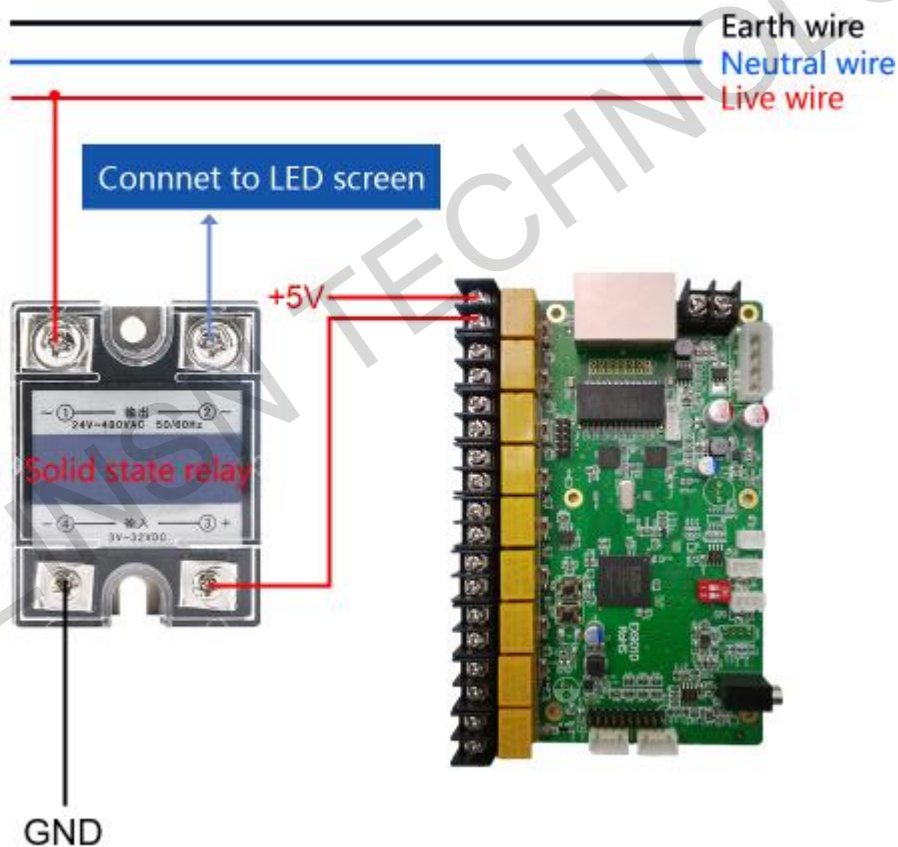
Tel: +86-0755-86183590/ 4008836968

Place EX902D between the sending card and the first receiving card (usually near the LED screen side, or depends on the user).

## 2) Controlling power supply of the screen remotely

Power1, Power2, Power3 on/off control by sending card

FAN, AC on/off control (check the picture below for connecting the multifunction board as reference; the first picture shows connection to **solid state relay**, the second picture shows connection to **AC contactor**).



Official website: [www.linsn.com](http://www.linsn.com)

Add: Floor 15&16, Jiajiahao Business Building, No. 10168, Shennan Blvd,  
Nanshan District, Shenzhen

Tel: +86-0755-86183590/ 4008836968



### 3) Temperature/humidity inside or outside the cabinets

Place the Temperature/humidity sensor in a proper place  
(extend the cable accordingly),

LedSet/LEDStudio(LEDStudioV12.60 or earlier ) will fetch  
and show the data value from the sensor on LED Screen.

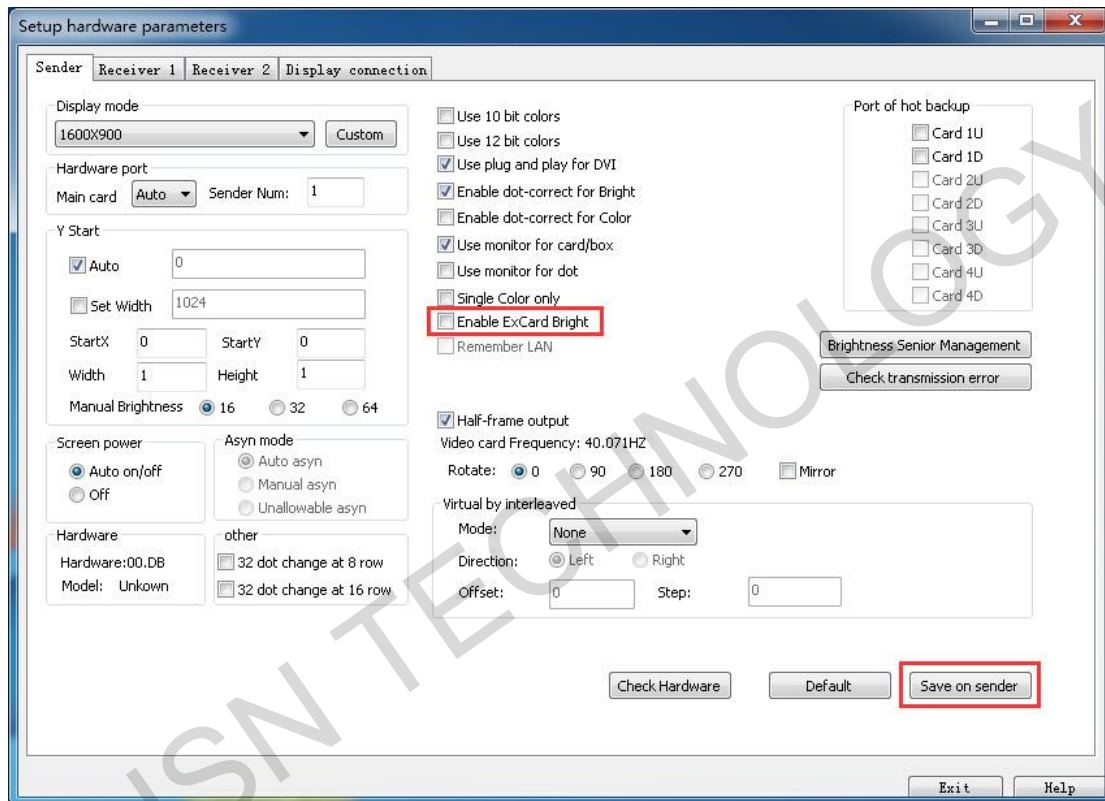
### 4) Brightness auto-adjustment

Official website: [www.linsn.com](http://www.linsn.com)

Add: Floor 15&16, Jiajiahao Business Building, No. 10168, Shennan Blvd,  
Nanshan District, Shenzhen

Tel: +86-0755-86183590/ 4008836968

Place the Temperature/humidity sensor in a proper place (extend the cable accordingly); check **Enable ExCard Bright** option for multifunction board in Ledset/LedStudio12.60(or earlier) to realize the brightness auto-adjustment function.



## 5) Audio transmission

Input Audio data to 3.5mm audio jack on Sending card; the audio data will be transmitted to multifunction board via RJ45 cable, then separate the Audio data and output from 3.5mm audio jack on multifunction board.

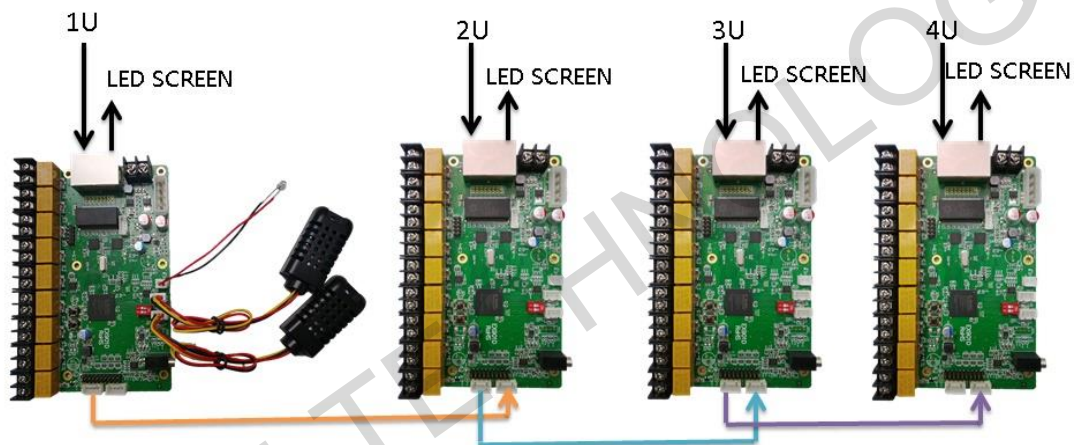
Official website: [www.linsn.com](http://www.linsn.com)

Add: Floor 15&16, Jiajiahao Business Building, No. 10168, Shennan Blvd,  
Nanshan District, Shenzhen

Tel: +86-0755-86183590/ 4008836968

## 6) EX902D Cascade Mode

When you use several sending cards cascaded for one screen, you also need to connect the multifunction boards in cascade if you are using multifunction board. For 4-multifunction-board cascade, please do the connection as follows (by using the connectors below, you don't need to change the dip switches).

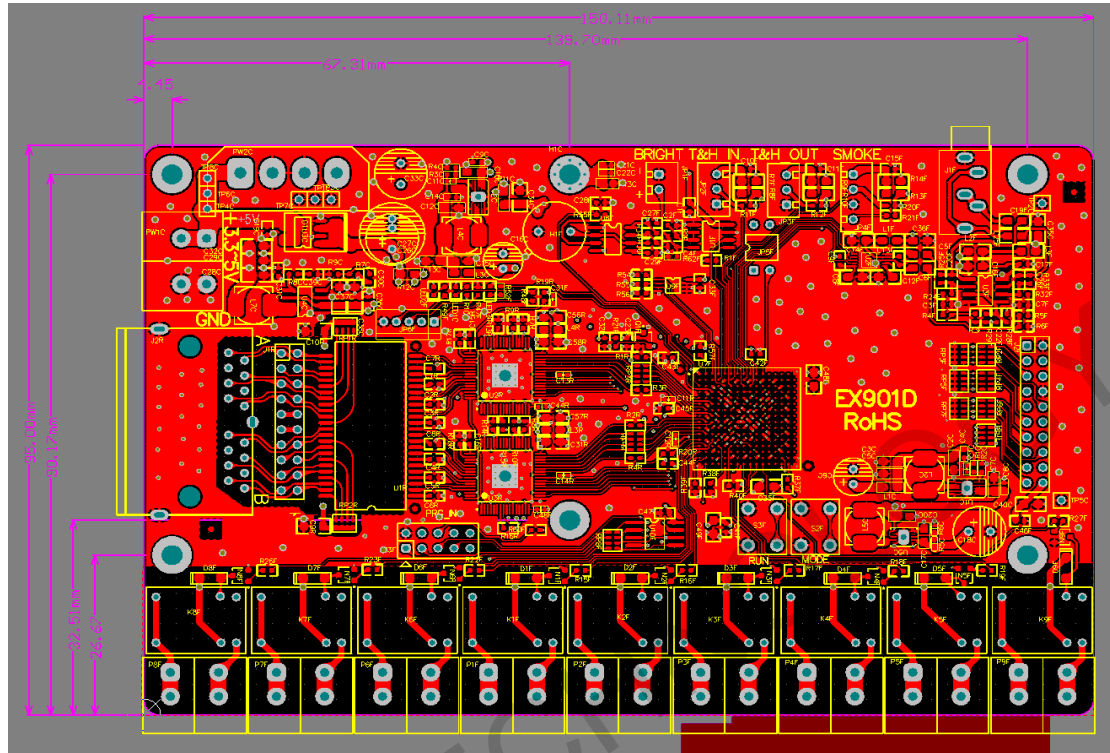


Official website: [www.linsn.com](http://www.linsn.com)

Add: Floor 15&16, Jiajiahao Business Building, No. 10168, Shennan Blvd,  
Nanshan District, Shenzhen

Tel: +86-0755-86183590/ 4008836968

#### 4. Installation hole position and dimension



Official website: [www.linsn.com](http://www.linsn.com)

Add: Floor 15&16, Jiajiahao Business Building, No. 10168, Shennan Blvd,  
Nanshan District, Shenzhen

Tel: +86-0755-86183590/ 4008836968

## 5.Specifications

Rated Voltage (V)	5	Maximum value	5.5	Minimum value	4.5
Rated Current (A)	0.40	Maximum value	0.45	Minimum value	0.35
Rated power consumption (W)	2.0	Maximum value	2.5	Minimum value	1.6
Environment Temperature (°C)	-20°C ~ 75°C				
Environment Humidity (%)	0% ~ 95%				

**END**

Official website: [www.linsn.com](http://www.linsn.com)

Add: Floor 15&16, Jiajahao Business Building, No. 10168, Shennan Blvd,  
Nanshan District, Shenzhen

Tel: +86-0755-86183590/ 4008836968