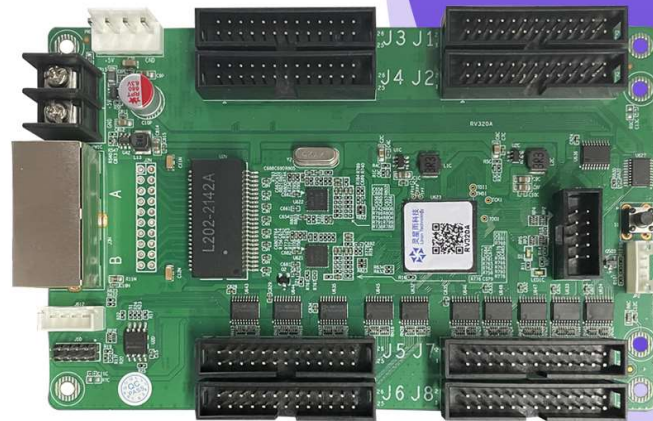




Linsn Technology



# RV320A

## Receiver

# Specifications

V3.0

## Revision History

Document Version	Hardware Version	Revision Date	Note
V3.0	V1	2022/3	New edition

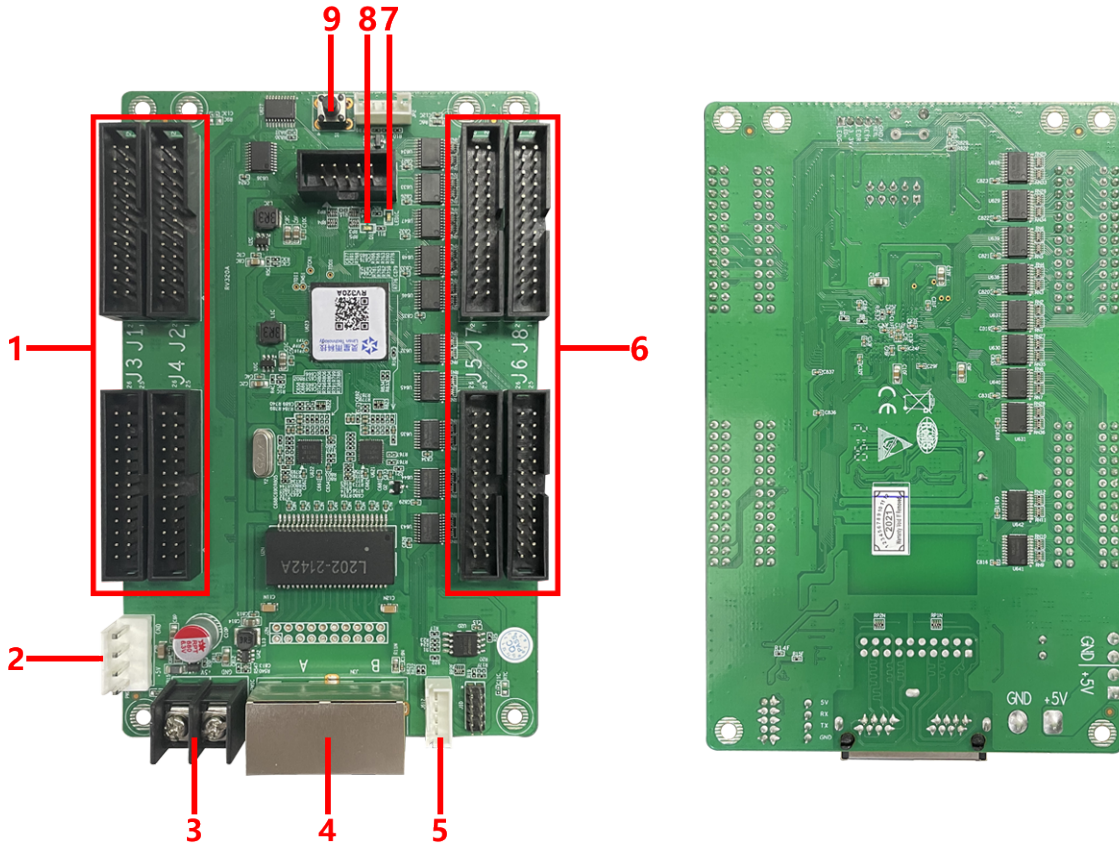
## Overview

RV320A is a standardize product for LED screen manufacturer, which is integrated with 8 standard hub320-type connectors and does not require an extra hub card. One card supports up to 512\*512 pixels, up to 256\*256 pixels for calibration and up to 32sets of RCG data.

## Functions and features

1. Single card can support 32 group of RGB data output mode
2. Maximum supports 512X512 pixels
3. Supports brightness calibration pixel by pixel and single-card color space conversion
4. Supports network cable BER test
5. Supports configuration file read back
6. Supports 138 decode, 595 serial decode and so on
7. Realizes high refresh and high gray level effect

## Appearance



No.	1/6	2	3	4
Description	HUB320 connector	Power port	Power connector	Gigabit port
No.	5	7	8	9
Description	Self-test button	Green indicator	Red power indicator	Self-test extension port

Official website: [www.linsn.com](http://www.linsn.com)

Add: Floor 15&16, Jiajiahao Business Building, No. 10168, Shennan Blvd,  
Nanshan District, Shenzhen

Tel: +86-0755-86183590/ 4008836968

## Pinouts

		JIH			
R1	1	1	2	2	G1
B1	3	3	4	4	GND
R2	5	5	6	6	G2
B2	7	7	8	8	GND
R3	9	9	10	10	G3
B3	11	11	12	12	GND
R4	13	13	14	14	G4
B4	15	15	16	16	GND
A 1	17	17	18	18	B 1
C1	19	19	20	20	D 1
E1	21	21	22	22	GND
SCLK1	23	23	24	24	LAT1
OE1	25	25	26	26	GND

26PIN

/	R1	1	2	G1	/
/	B1	3	4	GND	GND
/	R2	5	6	G2	/
/	B2	7	8	GND	GND
/	R3	9	10	G3	/
/	B3	11	12	GND	GND
/	R4	13	14	G4	/
/	B4	15	16	GND	GND
Row selection signal	A	17	18	B	Row selection signal
Row selection signal	C	19	20	D	Row selection signal
Row selection signal	E	21	22	GND	GND
Scan clock	CLK	23	24	LAT	Latch
Display enable	OE	25	26	GND	GND

Official website: [www.linsn.com](http://www.linsn.com)

Add: Floor 15&16, Jiajiahao Business Building, No. 10168, Shennan Blvd,  
Nanshan District, Shenzhen

Tel: +86-0755-86183590/ 4008836968



## Specifications

Capacity	512X512 Pixels	
Power	Input Voltage	DC4.5V ~ 5.5V
	Rated power consumption	3W
Working Environment	Temperature	-20°C ~ 70°C
	Humidity	0% ~ 95%
Physical Dimensions	Dimensions	144.0 X 91.2 mm
	Weight	
Packing Info	Packing	Each card packed with small red foam bag, and 100pcs per carton
	Carton Dimension	622.0mm × 465.0mm × 176.0mm
	Carton Weight	13.0 kg

END